

Identify the Fish

Use these labels to help you identify each type of crappie. Check your work and learn more about Black and White Crappie from our fish fact sheets.

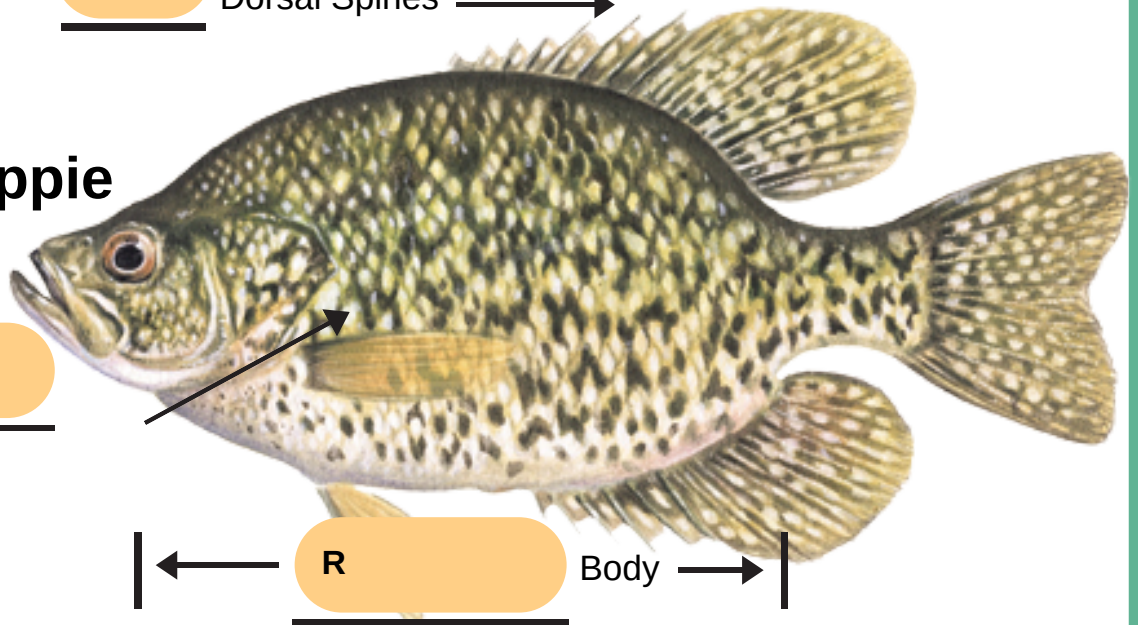
tackleshare.com/resources

- Black
- 6-7
- Round
- Are Irregular
- White
- 7-8
- Long
- Form Vertical Lines

 Dorsal Spines →

 Crappie

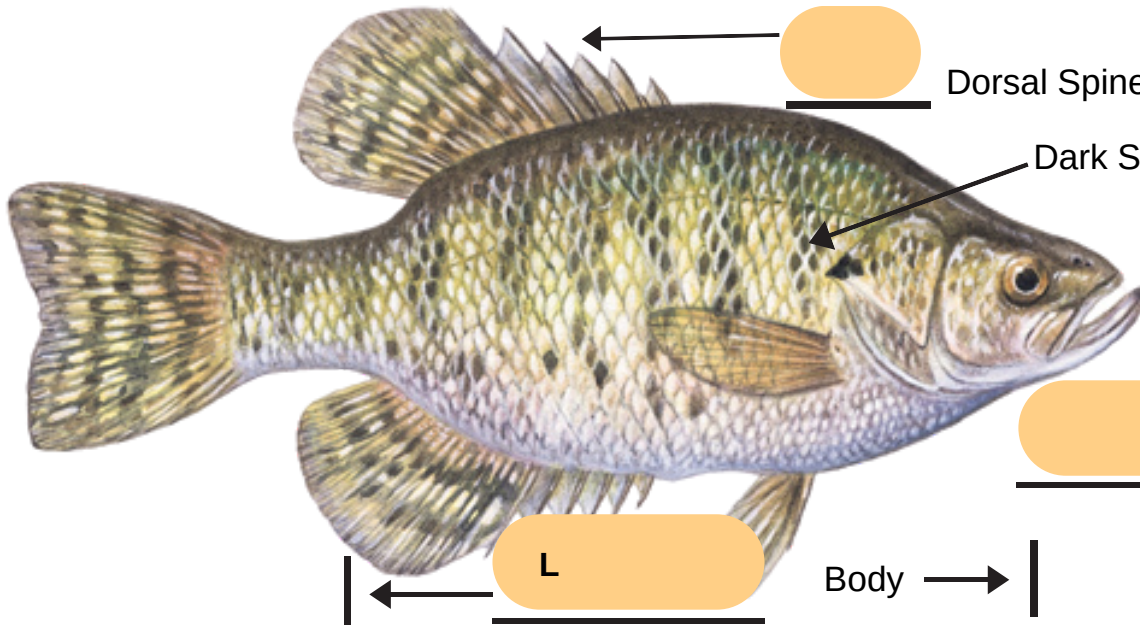
Dark Spots



← Dorsal Spines

Dark Spots

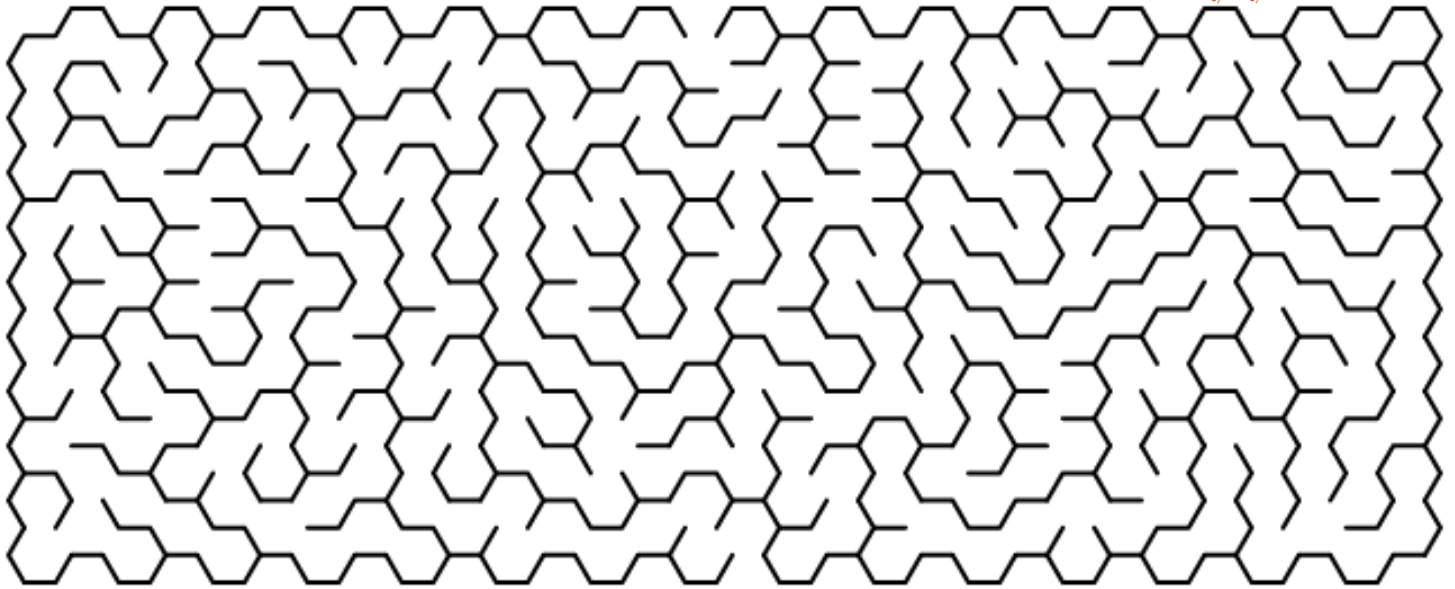
 Crappie



Maze



THEME



Word Search



O J M G F S P O O N S C
 Y R F H S I F F C E J X
 W H I T E C R A P P I E
 E C I L R D B V L U N S
 E E I S W O N N I M Y A
 D W G N I H S I F E C I
 S W S S L A B S I N O A
 X Z G G F O V O X V S C
 Q I G N I G G I J Y I L
 J M O M S C H O O L S A
 B L A C K C R A P P I E
 X B Q I N S E C T S E R

- BLACK CRAPPIE
- WHITE CRAPPIE
- FISH FRY
- JIGS
- ICE FISHING
- MINNOWS
- INSECTS
- SLABS
- WEEDS
- JIGGING
- SPOONS
- SCHOOLS



A reel-ly fishy joke!

Why do crappie swim in schools?

Because they can't walk.

